

# Wilderness Lodges of New Zealand

wildernesslodge.co.nz



## Wilderness Lodge® Arthur's Pass

16km East of Arthur's Pass Village, Highway 73

arthurspass@wildernesslodge.co.nz

+64 3318 9246



## Wilderness Lodge® Lake Moeraki

90km South of Fox Glacier, Highway 6

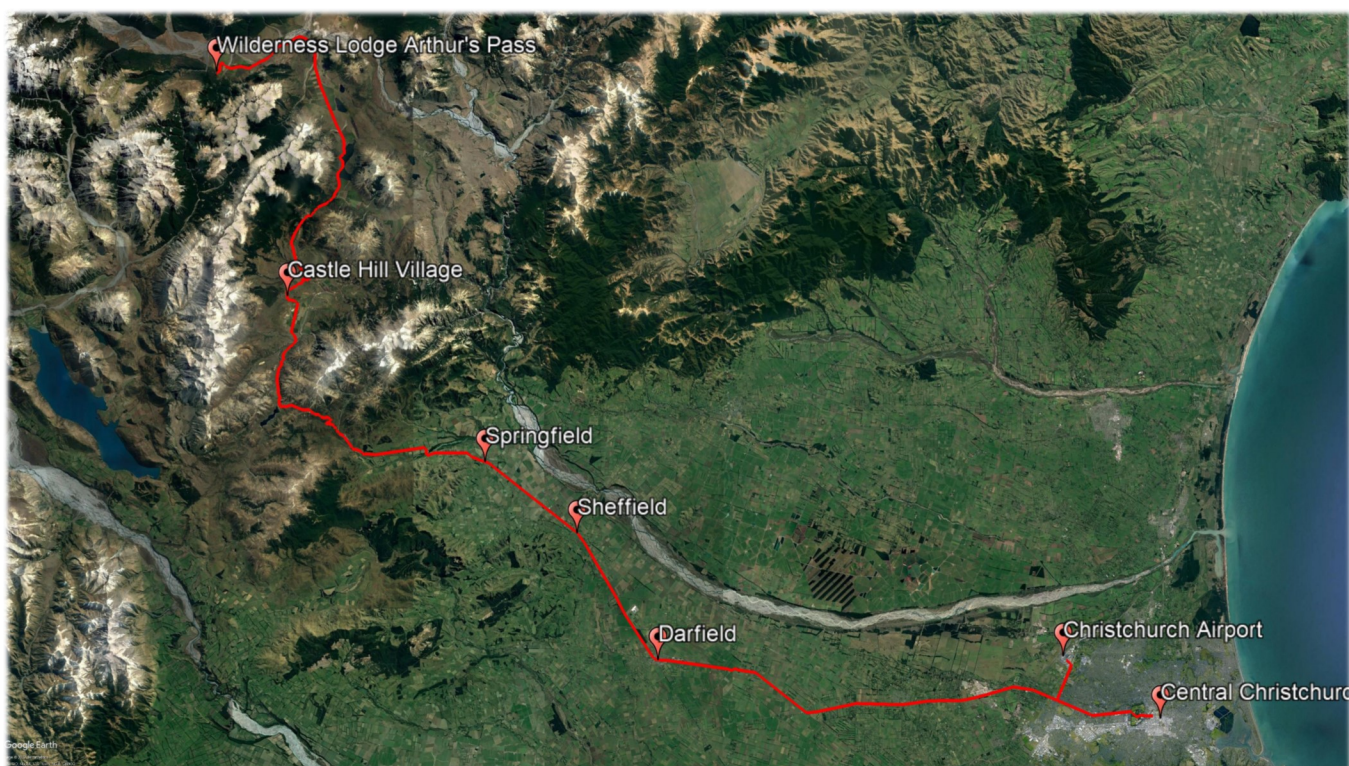
lakemoeraki@wildernesslodge.co.nz

+64 3750 0881

## Route Guide: Wilderness Lodge Arthur's Pass to Christchurch

This is a journey of just under two hours' drive time. It takes you east and south from the Wilderness Lodge through dry mountains, past glaciated lakes and striking limestone rock formations. Dropping down from the Alps to the productive flat land of the Canterbury Plains, easy straight roads pass small agricultural towns and quickly deliver you to Christchurch, the largest city in the South Island.

*Enjoy Your Journey, Drive Safely & Remember to Keep Left*

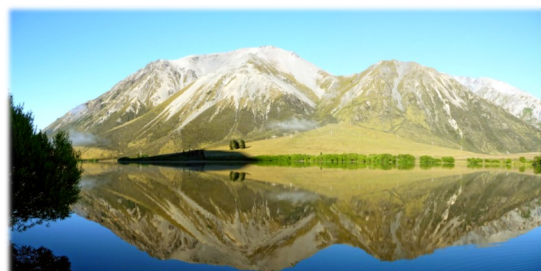


### Wilderness Lodge Arthur's Pass to Castle Hill Village (37km – 30 minutes)

Turn right at the end of the Wilderness Lodge driveway and State Highway 73 will take you all the way to Christchurch. For the first 12km you travel through the Wilderness Lodge farm, initially past pastures and then below steep mountain slopes where sheep graze during the milder times of year. Every few months we must walk up to 1500 sheep along this stretch of road, starting at dawn before there is too much traffic.

Notice the landscape change as you travel east. You are now in the rain shadow of the Southern Alps where rainfall drops dramatically, forest is sparse and the landscape takes on a tawny golden hue, captured so well by painters like Rita Angus and Bill Sutton.

Pass glacier carved Lakes Grasmere and Pearson and climb steeply up 'Craigieburn Cutting' into the Castle Hill Basin, a landscape dominated by imposing limestone outcrops. You may see evidence here of a major conservation project to protect the landscape from invasive lodge-pole pines. Castle Hill Village is a quiet collection of mostly holiday homes (no services available).



Lake Pearson/Moana Rua was carved out by ice-age glaciers and is today an important wildlife refuge.



---

### Castle Hill Village to Springfield (33km - 25 minutes)

Four kilometres past the Village is the popular and spectacular Kura Tawhiti Conservation Area. If time allows, stop and explore these towering natural limestone castles, it really is worth it (allow 30-90 minutes).

Continuing on Highway 73, you reach the summit of Porters Pass, the high section of the road at 937 meters (3075 feet) and then drop steeply down to the Kowai River. The small village of Springfield is 15km further along. Here you will find fuel and some small stores and cafes.

---

### Springfield to Christchurch

(Central City: 70km - 1 hr/Airport: 63km - 50 mins)

The Highway is flat and straight, passing through the productive farming land of the Canterbury Plains. Created by gravels washed out from the Southern Alps by large braided rivers, this land has traditionally been used for mixed cropping, though much has now converted to dairying with the introduction of large scale irrigation. 10km past Springfield is the tiny village of Sheffield, home to a famous bakery. If you want to try a traditional New Zealand meat pie, this is your chance!



The limestone castles of Kura Tawhiti



Above: The Sheffield Pie Shop has a reputation for producing some of New Zealand's tastiest meat pies.

Right: Christchurch is known as the 'Garden City'. Hagley Park and the botanic gardens lie at the heart of the city.



*The Wilderness Lodge Arthur's Pass Team Wishes You The  
Happiest Of Travels & We Hope To See You Again.*