



# WILDERNESS LODGE

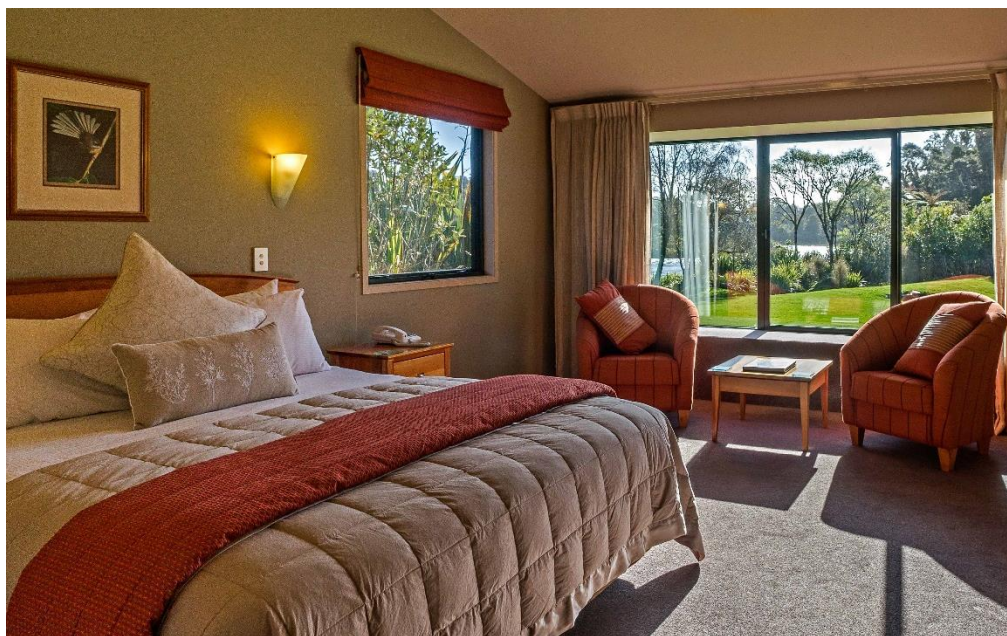
---

## LAKE MOERAKI

### Wilderness Discovery Weeks: October-November-December 2020

Day	Breakfast	Morning activity	Lunch	Afternoon activity	Pre-Dinner	Dinner	Post Dinner
Wed		<u>Travel day</u>		<p>Either arrival from Wanaka &amp; Queenstown by Intercity Bus (1:30pm)</p> <p>Or arrival by private car</p> <p><u>Relaxation &amp; Riverside Walk</u></p>	<p><b>6.30 - 7.15pm</b></p> <p><u>Welcome to Wilderness Lodge (trip B):</u></p> <p>Human settlement in the wilderness – a historic talk</p>	<b>7.30pm</b>	<b>9.30pm</b>
Thurs	<b>8.00am</b>	<p><b>9.00am</b></p> <p><u>Journey to the Tasman Sea (trip 1):</u></p> <p>Lower Moeraki rainforest walk and easy kayak to Moeraki Beach. Driftwood and gemstone discovery</p>	<b>12.30pm</b>	<p><b>1.30pm</b></p> <p><u>Relaxation Afternoon:</u></p> <ul style="list-style-type: none"> <li>• Learn Easy Kayaking (trip D)</li> <li>or</li> <li>• Riverside Nature Walk (trip E)</li> </ul>	<p><b>5.00 - 6.30pm</b></p> <p><u>Pounamu/Jade &amp; Gemstones (trip C):</u></p> <p>Origins, diversity &amp; treaty partner relationship. We will show polished samples to the group</p>	<b>7.30pm</b>	<b>8.30pm</b>
Fri	<b>8.00am</b>	<p><b>9.00am</b></p> <p><u>Ancient Trees (trip 2):</u></p> <p>Giant Rimu rainforest tree identification and Monro Beach walk</p>	<b>12.30pm</b>	<p><b>1.30pm</b></p> <p><u>Penguins #1 (trip 3):</u></p> <p>Robinson Crusoe Beach and Penguin Discovery (first trip)</p>	<p><b>5.00 - 6.45pm</b></p> <p><u>Giant Eels (trip G):</u></p> <p>Freshwater ecology - giant eels</p>	<p><b>7.30pm</b></p> <p>Wine tasting before dinner (trip H)</p>	<u>Free evening</u>
Sat	<b>8.00am</b>	<p><b>8.30am (early departure)</b></p> <p><u>Expedition South (trip 4):</u></p> <p>Jackson Bay/Okahu and the Cascade Plateau Discovery Day</p> <p>FULL DAY</p>	Picnic lunch on route	<p>Jackson Bay/Okahu and the Cascade Plateau Discovery Day (trip 4 continued)</p>	<p>Jackson Bay/Okahu and the Cascade Plateau Discovery Day (trip 4 continued)</p>	<b>7.30pm</b>	<b>8.30pm</b>

<b>Sun</b>	<b>8.00am</b>	<b>9.00am</b> <u>In the Pioneer's Footsteps</u> (trip 5): Historic Haast - Paringa Cattle Track walk to Heritage Site Blue Hut ( <i>built 1913</i> )	<b>12.30pm</b> Picnic at Blue Hut	<b>2.30pm</b> <u>Penguins #2</u> (trip 3): Robinson Crusoe Beach and Penguin Discovery ( <i>second trip</i> )	Penguin trip continues to watch and photograph late afternoon penguin arrivals	<b>7.30pm</b> Beach BBQ – Whakapohai ( <i>trip J</i> )	BBQ continues
<b>Mon</b>	<b>8.00am</b>	<b>10.00am</b> <u>Hector's Dolphins and Pounamu Jade</u> (trip 6): Wilderness Seacoast Adventure Walk Cole Creek to Ship Creek ( <i>Hector's dolphins</i> )	Rainforest picnic in the Kahikatea swamp forest	<u>Floating Forest</u> (trip 7): Ship Creek Walks including the Dune Lake Circuit and Swamp Forest	<b>5.00 - 6.30pm</b> <u>Relaxation time:</u> Or easy kayak on Lake Moeraki ( <i>trip D</i> )	<b>7.30pm</b>	<b>9.30pm</b> <u>Glow-worms, Night Sky &amp; Morepork Owls</u> (trip A)
<b>Tues</b>	<b>8.00am</b>	<b>7.00am</b> Easy Kayaking - Farewell to Lake Moeraki  <u>Travel day:</u> Depart by private car or Intercity Bus to Wanaka & Queenstown ( <i>10.30am</i> )					



The view from one of our lovely Rainforest Room



A pod of Hector's dolphins riding a wave on our Wilderness Seacoast Adventure Walk

# Wilderness Lodge Lake Moeraki

## Wilderness Week trip descriptions

### Full and half day trips:

1. **Lower Moeraki Rainforest to the Tasman Sea:** Walk through some of NZ's tallest kahikatea forest rich in birds. Kayak through a flax-lined lagoon to Moeraki Beach.
2. **Monro Beach Walk Rainforest Plant Identification:** The walk winds through rimu/fuchsia forest and across streams to a beach. This is home to Tawaki penguins. Great ferns.
3. **Tawaki Penguins Discovery (x2):** A coastal stream trip to our open hide. We quietly sit to watch Tawaki penguins walk between their rainforest nests and the sea. Great photography.
4. **Jackson Bay and Cascade Plateau:** A full day journey south to see kowhai and silver beech forest, manuka, pink pine and fascinating geology. We visit historic Jackson Bay, walk the wharf, visit the Craypot Café and learn about the failed European settlement of 1872.
5. **Historic Paringa to Haast Walk to Blue Hut:** A superb but wet historic track, once the South Westland highway, leads to the Moeraki Rapids and 107-years-old restored Blue Hut.
6. **Wilderness Seacoast Pounamu Jade and Hector Dolphin Walk:** A low-tide beach journey between basalt cliffs and the Tasman Sea. Great seabirds, Hector's Dolphins, rare plants and we may share kaimoana/seafood on a driftwood fire (tide/weather dependent)
7. **Dune Lake Wetlands and Swamp Forest Walks:** A chance to explore the Haast Coastal Plain mosaic of kahikatea and rimu forest sandwiched between wetlands. Great photography.

### Shorter trips/activities:

- A. **Glow-worms, Moreporks and the Southern Cross:** After-dinner journey of discovery (*walk*)
- B. **Edge of Wilderness:** Pioneering in the Moeraki Valley and southern South Westland (*talk*)
- C. **Gemstones/Pounamu jade:** Share beach collections. Rock polishing (*workshop*)
- D. **Learn Easy kayaking:** Great for beginners with training. Double kayak for novices (*kayak*)
- E. **Riverside Nature Walk:** Nature/bird walk in tall forest to the outlet of Lake Moeraki (*walk*)
- F. **Paringa to Haast Geology:** Tertiary geology of the Indo-Australian Continental Plate (*talk*)
- G. **Freshwater Ecology and Giant Long-Finned Eels:** Kakahi mussels, Inanga and Eels (*walk*)
- H. **Wine Tasting:** Some wine tasting fun after a day in the field
- I. **Plant identification session:** Name and learn to identify common forest plants (*workshop*)
- J. **Whakapohai Beach BBQ:** Meet neighbours to watch sunset into the Tasman Sea (*meal*)

